

GM SUV

Non-Sunroof Overhead Console

MATERIALS PROVIDED:

OVERHEAD CONSOLE
HEADLINER CUT-TEMPLATE
TRUSS HEAD SCREWS
BLACK ZINC SCREWS



TRUSS HEAD



BLACK ZINC

1] Remove the factory dome light from the vehicle's headliner.



FIGURE 1

[2] Place the supplied headliner cut template over the factory opening using pre-punched hole to align. Trace the template with a felt-tip marker and remove template. Score the marked headliner with a utility knife making a shallow pass to avoid slipping. Repeat deeper passes until the headliner drop is removable. [See Fig. 1]

[3] Position the supplied mounting board between the forward and the rear factory cross beams. Secure the mounting board with (4) supplied short truss head screws (short screws are used to prevent from piercing through the roof), (2) on the forward cross beam and (2) on the rear cross beam. [See Fig. 2]



FIGURE 2

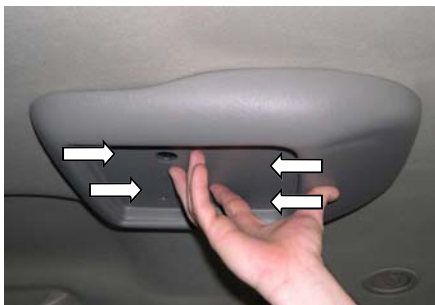


FIGURE 3

[4] Raise the overhead console to the headliner and route the wirings through the opening on the inside of the console. Install the supplied long truss head screws to secure the console to the previously installed mounting board. [See Fig. 3]
NOTE: DO NOT OVER TIGHTEN THESE SCREWS, OR DAMAGE MAY OCCUR!!!

[5] Make all remaining connections prior to installation of the flip down system. Use the supplied black zinc screws to attach the flip down system to the overhead console. [See Fig. 4]
NOTE: DO NOT OVER TIGHTEN THESE SCREWS, OR DAMAGE MAY OCCUR!!!



FIGURE 4

If Overhead A/C Control Exist

[6] Depending on the vehicles options, a factory rear A/C control unit may exist. Detach the A/C control from the brace. An A/C Relocation pod, **SD286A**, is required to relocate the factory A/C control towards the passenger side. With a needle nose pliers, squeeze the clips of the factory mounting bracket and pull the mounting bracket firmly downward to completely release it from the factory metal beam. Remove the remaining Velcro from the factory brace.



FIGURE 5

[7] At the forward position of the overhead pod, pull firmly downward to release the clips that hold it in place. **Do not pull the overhead pod completely down from the headliner.** [See Fig. 5]

[8] With the forward position of the overhead pod pulled down, disconnect the factory dome light wire harness from the factory dome light. Disconnect factory A/C controller wire harness from the factory A/C controller. Push down on both sides of the factory A/C controller to release the clips that hold it to the overhead pod. [See Fig. 6]

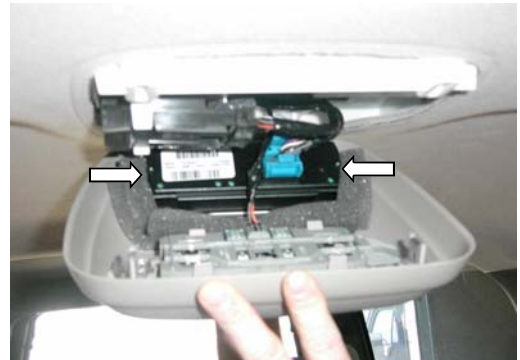


FIGURE 6



FIGURE 7

[9] Using a #20 Torx-head driver, remove the (2) screws that secure the overhead pod to the overhead mount. [See Fig. 7]