

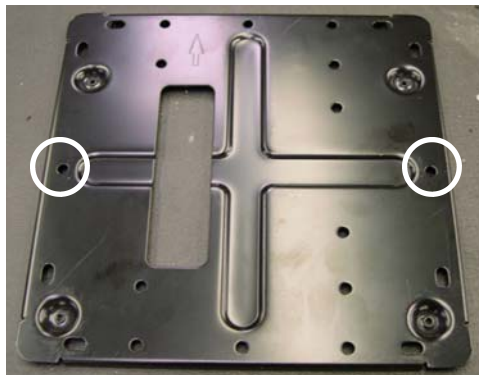
OVERHEAD CONSOLE INSTALLATION INSTRUCTIONS

COMBO 10.2" FLIP DOWN / DVD PLAYER



(FIGURE 1)

1) LOCATE THE SUPPLIED OVERHEAD CONSOLE AND POSITION IT FACING DOWNWARD. NOTICE THE (2) TREE CLIPS ALREADY INSTALLED ON THE OVERHEAD CONSOLE. [SEE FIG. 1]

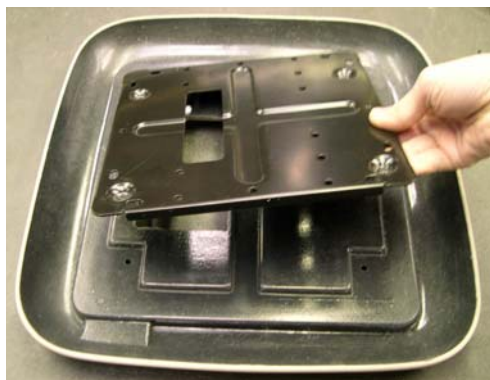


(FIGURE 2A)



(FIGURE 2B)

2) LOCATE THE METAL MOUNT BRACKET SUPPLIED WITH THE TV/MONITOR. POSITION THE BRACKET SO THAT THE (4) SCREW DIMPLES AND THE SIDE WALLS ARE FACING DOWNWARD. [SEE FIG. 2A & 2B]



(FIGURE 3A)



(FIGURE 3B)

3) POSITION THE BRACKET ON THE OVERHEAD CONSOLE, MAKE SURE THE PRE-CUT HOLES ON THE BRACKET AND CONSOLE ARE ON THE SAME SIDE. ALIGN THE (2) TREE CLIPS ON THE CONSOLE TO THE PRE-DRILLED HOLES IN THE SIDE OF THE BRACKET. [SEE FIG. 3A] HOLD THE TREE CLIPS IN PLACE AND PUSH THE BRACKET TO THE CONSOLE UNTIL IT STOPS. [SEE FIG. 3B]

4) ONCE THE BRACKET IS SECURED TO THE OVERHEAD CONSOLE, DRILL OUT THE MOUNTING HOLES THROUGH THE BRACKET AND THROUGH THE CONSOLE FOR THE POSITION THAT YOU AS THE INSTALLER FEELS NECESSARY. NOTICE THE TWO MARKED BRACKET HOLES THAT "CANNOT" BE USED FOR CONSOLE SECUREMENT PURPOSES. [SEE FIG. 3B] AFTER THE CONSOLE HAS BEEN MOUNTED TO THE HEADLINER, MOUNT THE TV/MONITOR TO THE CONSOLE/BRACKET USING THE TV/MONITOR SUPPLIED SCREWS.